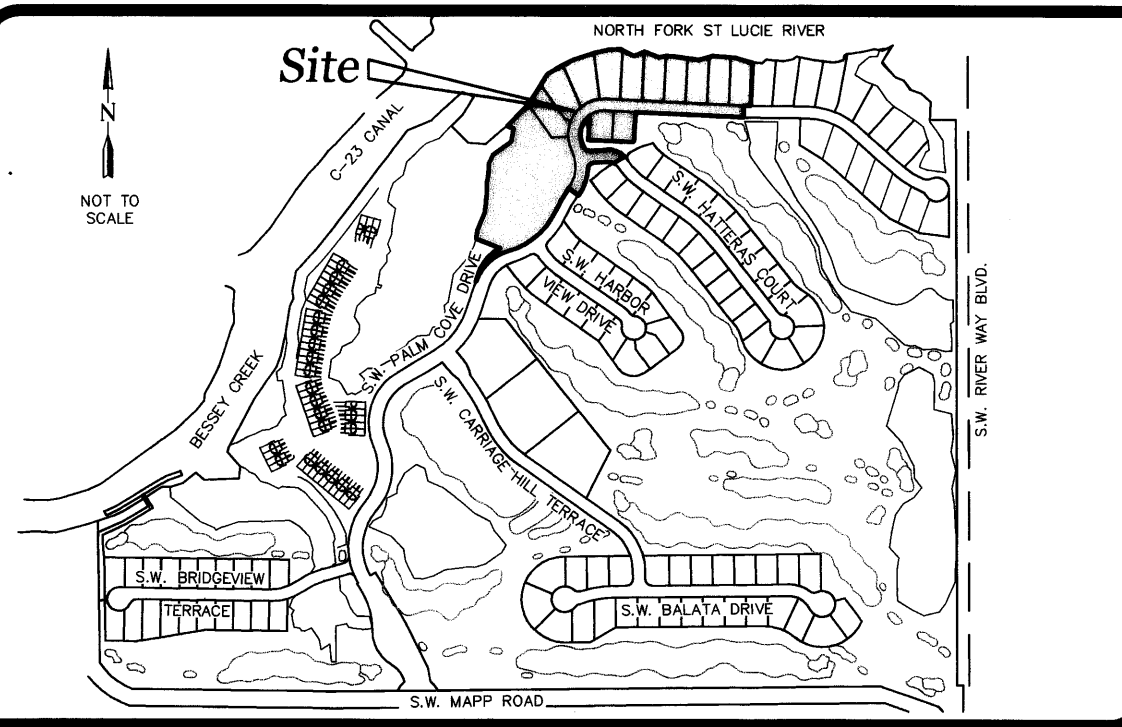


Palm Cove Golf & Yacht Club Phase 19, A P.U.D.(r)

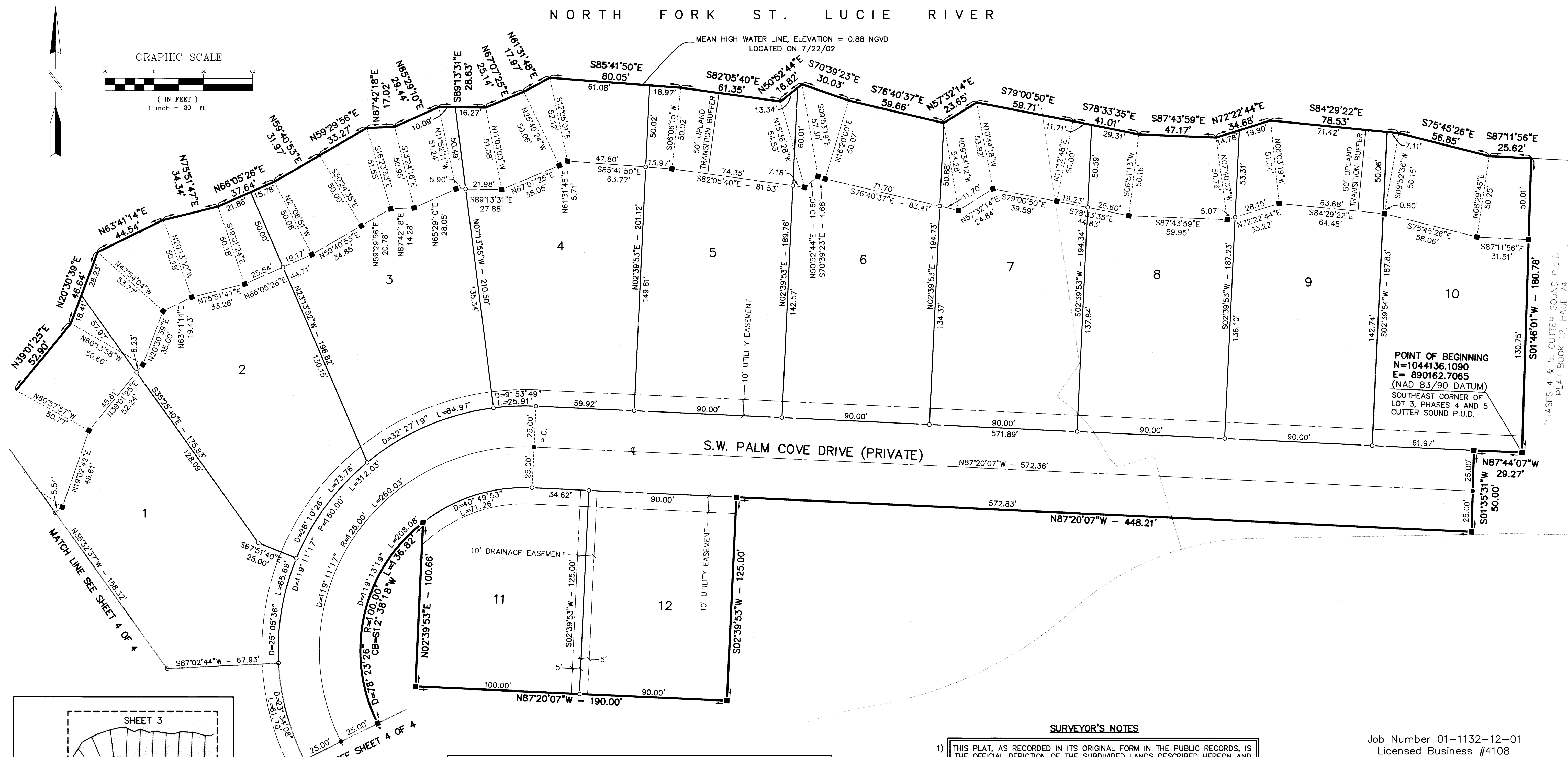
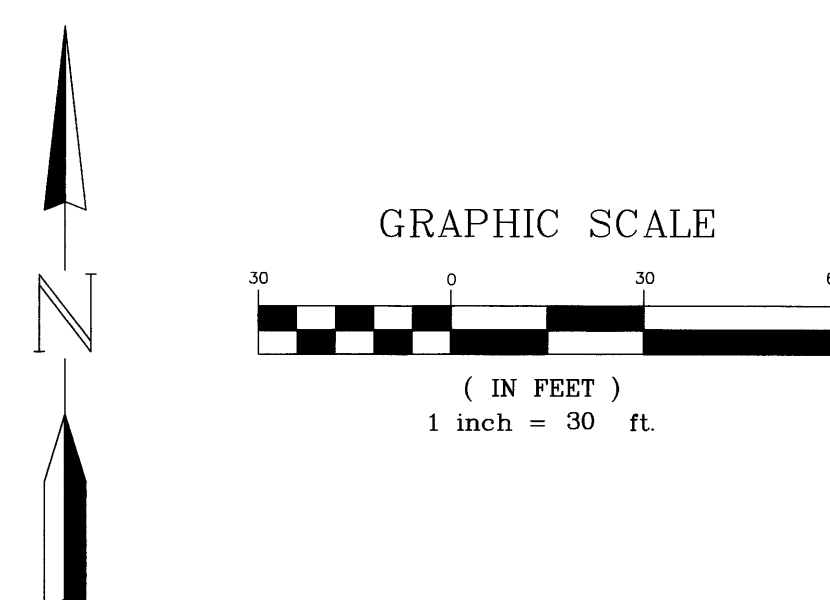
Plat Book 15 Page 40
~~SHEET 3~~

Being a parcel of land lying in Section 6, Township 38 South, Range 41 East and also being a replat of a portion of the Plat of Phases 3 and 8, Cutter Sound P.U.D. as recorded in Plat Book 12, Page 50, public records, Martin County, Florida. and a portion of the Plat of Phases 4 and 5, Cutter Sound P.U.D. as recorded in Plat Book 12, Page 74, public records, Martin County, Florida.

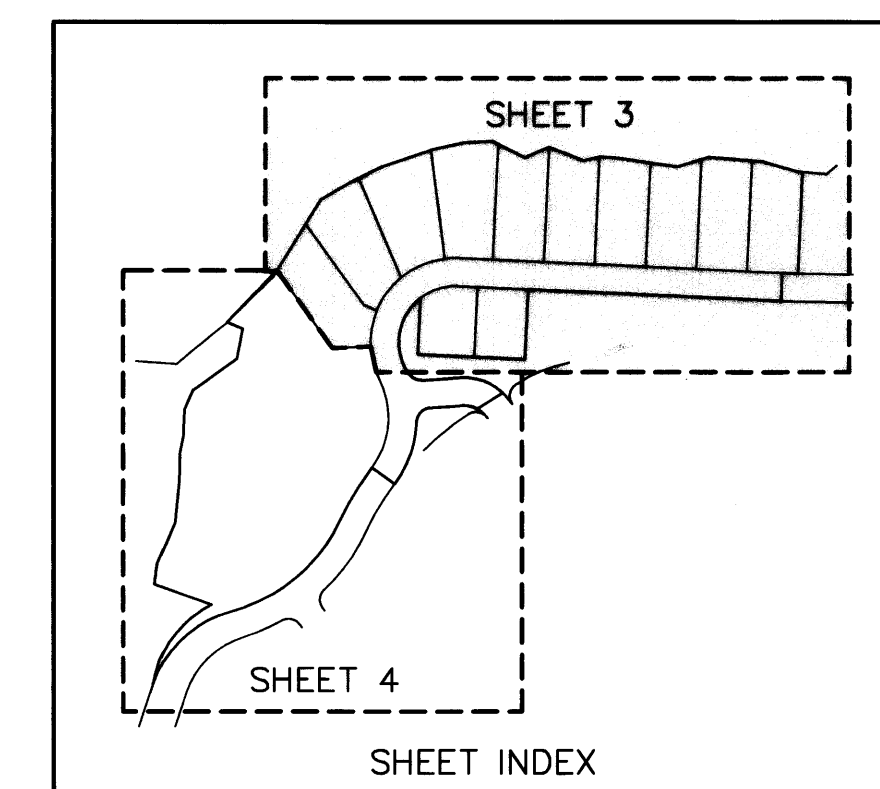
October 2002



LOCATION MAP



PHASES 4 & 5, CUTTER SOUND P.U.D. PLAT BOOK 12, PAGE 74



LEGEND

● = SET PERMANENT CONTROL POINT (PCP) PARKER KALON NAIL & WASHER LABELED "GCY LB 4108"	CB = CHORD BEARING
○ = SET 3/4" IRON PIPE WITH YELLOW CAP LABELED "GCY, INC. LB 4108"	D.E. = DRAINAGE EASEMENT (PRIVATE)
■ = SET PERMANENT REFERENCE MONUMENT (PRM) 4"x4" CONCRETE MONUMENT WITH DISK LABELED "GCY INC. P.R.M. LB 4108, PSM 4864"	LB = LICENSED BUSINESS
D = DELTA (CENTRAL ANGLE)	M.E. = MAINTENANCE EASEMENT
L = ARC LENGTH	P.C. = POINT OF CURVATURE
R = RADIUS	P.R.C. = POINT OF REVERSE CURVATURE
	PSM = PROFESSIONAL SURVEYOR AND MAPPER
	P.T. = POINT OF TANGENCY
	P.U.D. = PLANNED UNIT DEVELOPMENT
	(R) = RADIAL LINE
	U.E. = UTILITY EASEMENT

- SURVEYOR'S NOTES**
- THIS PLAT, AS RECORDED IN ITS ORIGINAL FORM IN THE PUBLIC RECORDS, IS THE OFFICIAL DEPICTION OF THE SUBDIVIDED LANDS DESCRIBED HEREON AND WILL IN NO CIRCUMSTANCES BE SUPPLANTED IN AUTHORITY BY ANY OTHER FORM OF THIS PLAT, WHETHER GRAPHIC OR DIGITAL.
 - THERE MAY BE ADDITIONAL RESTRICTIONS THAT ARE NOT RECORDED ON THIS PLAT THAT MAY BE FOUND IN THE PUBLIC RECORDS OF THIS COUNTY.
 - THERE SHALL BE NO BUILDING OR ANY OTHER KIND OF CONSTRUCTION, OR PLACEMENT OF TREES OR SHRUBS ON DRAINAGE EASEMENTS.
 - BEARINGS SHOWN HEREON ARE REFERENCED TO THE WEST LINE OF LOT 4 PHASES 4 & 5 CUTTER SOUND P.U.D., AS RECORDED IN PLAT BOOK 12, PAGE 50, PUBLIC RECORDS, MARTIN COUNTY, FLORIDA. SAID LINE BEARS SOUTH 01° 46' 01" WEST.

Job Number 01-1132-12-01
 Licensed Business #4108

GCY
 INCORPORATED
 PROFESSIONAL SURVEYORS AND MAPPERS
 CERTIFICATE OF AUTHORIZATION LB 4108
 CORPORATE OFFICE: PALM CITY, FL 34991
 TALLAHASSEE OFFICE: 4909 N. MONROE STREET, TALLAHASSEE, FL 32303
 (800) 396-1066 (850) 536-8455